

# Technical Guide for the Product User

## NYAB Locomotive Parking Brake

### PRODUCT DESCRIPTION

The NYAB Locomotive Parking Brake is an automated, electric motor-driven system. It can be operated in automatic, manual or 'mixed' mode. The primary operator interface is a control panel incorporating two push buttons: one to set the brake and the other to release it.

Part Number 792799



Front View



Rear View

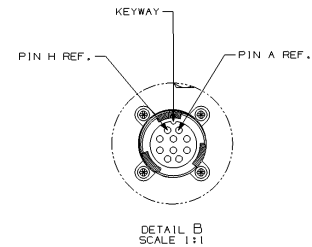
### FEATURES

- Designed for OEM and retrofits for electric Locomotive Parking Brake applications
- No need to physically switch between Auto and Manual Mode
- Moisture- and contaminant-resistant motor (IP-66 rated)
- 20-year service life: 13,500 auto and 1,500 manual apply/release cycles
- No routine maintenance required for power unit over the service life
- Hand wheel meets AAR standard S-475, Standard No. 1 (deep dish)
- External interface port to update software without card removal
- NYAB chain and winding drum minimize chain binding and wear
- Chain can be replaced without removal of brake from locomotive
- Locomotive Parking Brake indicates loaded state when applied through Auto Mode
- Brake Applied signal – When the brake is successfully applied, a signal is available on pin G of the Power Input connector.
- Brake Released signal – When the brake is successfully released, a signal is available on pin F of the Power Input connector.
- Brake Not Fully Released signal – This signal is the compliment of the Brake Fully Released signal and is available on pin E of the Power Input connector.

# NYAB Locomotive Parking Brake

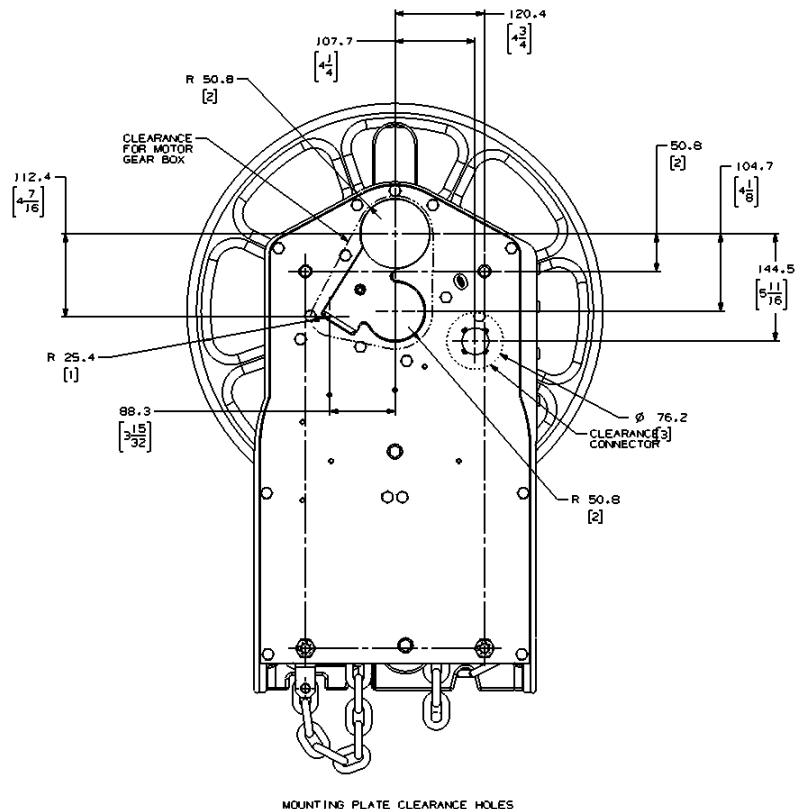
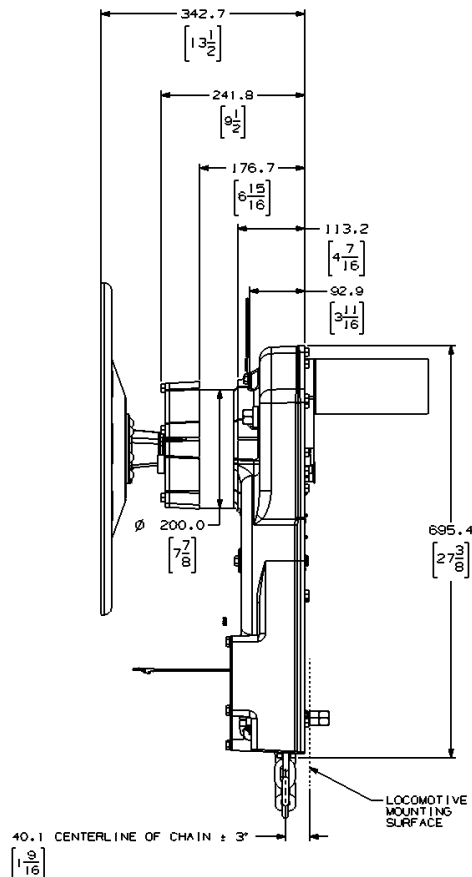
## TECHNICAL SPECIFICATIONS

- Operating Voltage Range: 45 to 85 VDC operating (tolerates continuous exposure up to 135 VDC)
- Brake Chain: 3/8" Grade 100 chain supplied with the brake (must be supplied by NYAB)
- Chain Angularity Limits: 5 degrees side to side, 3 degrees front to back
- Vertical Chain Force: 6300 lbs nominal (5200 lbs min, 7700 lbs max)
- Maximum Inrush Current: 20 Amps @ 74 VDC for <100 milliseconds
- Full Load Current (Standard Power version): 6.0 Amps @ 74 VDC
- Operating Temperature Range: -40° to +158° F (-40° to +70° C)
- Chain Take-Up Rate in Automatic Mode: 0.8 ft/minute (no load)
- Polarity Sensitive: Yes (will not operate if polarity is reversed)
- Mounting Bolts: Four 5/8-11 x 5.0" hex head bolts (supplied)
- Average Run Current: 1.0 Amps @ 74 VDC
- Weight: 216 lbs (without wheel and chain)
- Optional button control is available with separate LPB control box (P/N 795644)



PORT J10 PINS		
PIN	LABEL	VOLTAGE
A	APPLY SIGNAL	74 VDC NOMINAL INPUT
B	RELEASE SIGNAL	74 VDC NOMINAL INPUT
C	74 VDC RETURN	
D	UNUSED	N/A
E	NOT FULLY RELEASED SIGNAL	74 VDC NOMINAL OUTPUT
F	RELEASE INDICATOR	74 VDC NOMINAL OUTPUT
G	APPLY INDICATOR	74 VDC NOMINAL OUTPUT
H	POWER, POSITIVE 74VDC	74 VDC NOMINAL INPUT
I	UNUSED	N/A
J	POWER AND FAULT INDICATOR	74 VDC NOMINAL OUTPUT

## INSTALLATION



## NEW YORK AIR BRAKE

www.nyab.com

748 Starbuck Avenue, Watertown, New York 13601

Telephone: 315-786-5200 . 1-888-TEN NYAB

FAX: 315-786-5673 (Engineering)

315-786-5675 (Marketing)

Copyright © NYAB. All rights reserved, including industrial property rights applications.  
NYAB retains any power of disposal, such as copying and transferring.



Knorr-Bremse Group

TG-56 / 08/20/21 / Rev. 1

Page 2 of 2